

# AS

## Absolute Signature

Patented target technology for resolute synergy between the CyScan sensor and the Prism

Positioning Technology From  
**GUIDANCE**

## AS Technology

– Delivers the highest level of laser position reference sensor performance ever seen between a vessel and the asset

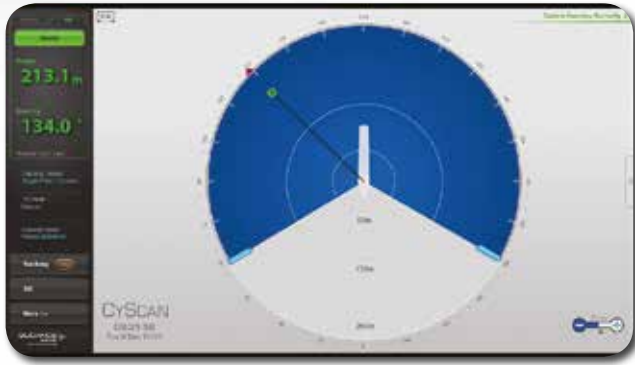


## Benefits

- Guaranteed 'signature lock' between the CyScan AS sensor and the target
- Automatic target identification and acquisition
- Eliminates the possibility of false reflection walk-off incidents
- Increases level of false reflection immunity
- Reduces turnaround time – increases operational performance

Absolute Signature (AS) technology delivers levels of confidence previously unachievable in laser position reference sensor navigation. The next generation in laser reference technology, it resolves long-standing, common industry challenges by providing improved confidence and performance during target identification, acquisition and tracking.

An enhancement of the CyScan<sup>®</sup> Mk4 sensor, the signature allows immediate and definitive elimination of clutter. The synergy between the sensor and the target using AS technology defines the next evolution.



Absolute Signature (AS) technology provides a unique signature from the AS Prism. The signature recognition distinguishes the difference between targets and false reflections, such as high visibility workwear. The technology acquires the correct target in a cluttered environment and maintains Signature Lock throughout the duration of the operation.

**Problems in the field**

False reflections such as high visibility workwear causes walk-off problems

With the complexity of modern day bridge environments the operator has more and more decisions to make

Poor quality, unmaintained targets compromise operations

**Absolute Signature technology**

Absolute Signature determines the true target and filters out clutter, rejecting false reflections

Dashboard displays only the true target, reducing the need for decision making and operator error

Introduces an industry standard for Laser Targets

Do not compromise the performance of your laser position reference sensor.

**Absolute Signature is here: are you involved?**