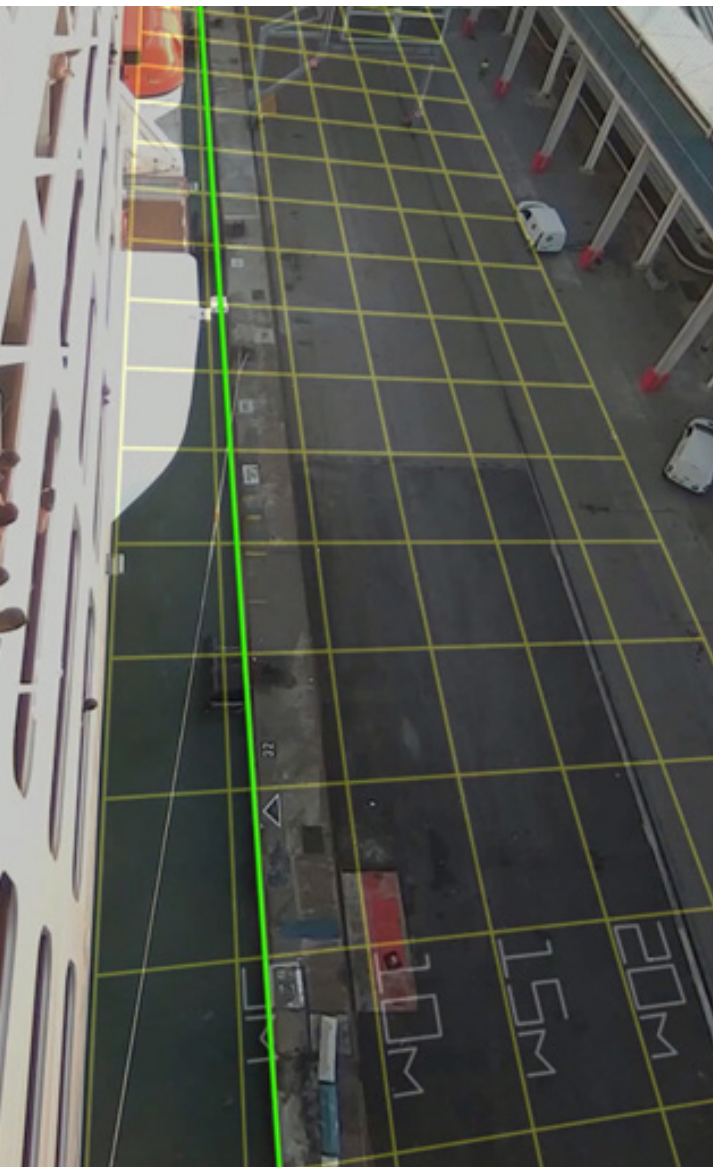


Wärtsilä SmartQuay

Docking support for cruise vessels



SmartQuay provided by Guidance Marine is a distance and lateral approach speed measurement solution that assists cruise vessels coming into port over the last portion of their manoeuvres, from tens of metres down to near contact. SmartQuay uses real-time video analytics from daylight and thermal infrared camera sensors to give a precise gap measurement between the vessel hull and the quay side. The gap measurement is visually and numerically displayed on an intuitive touchscreen console.



Benefits

- Increase visibility with relevant data
- Assists with visual obstructions e.g. lifeboats and panoramic decks
- Optional integration with existing bridge console and other navigation systems
- Measures the range and closing speed to any nearby quayside

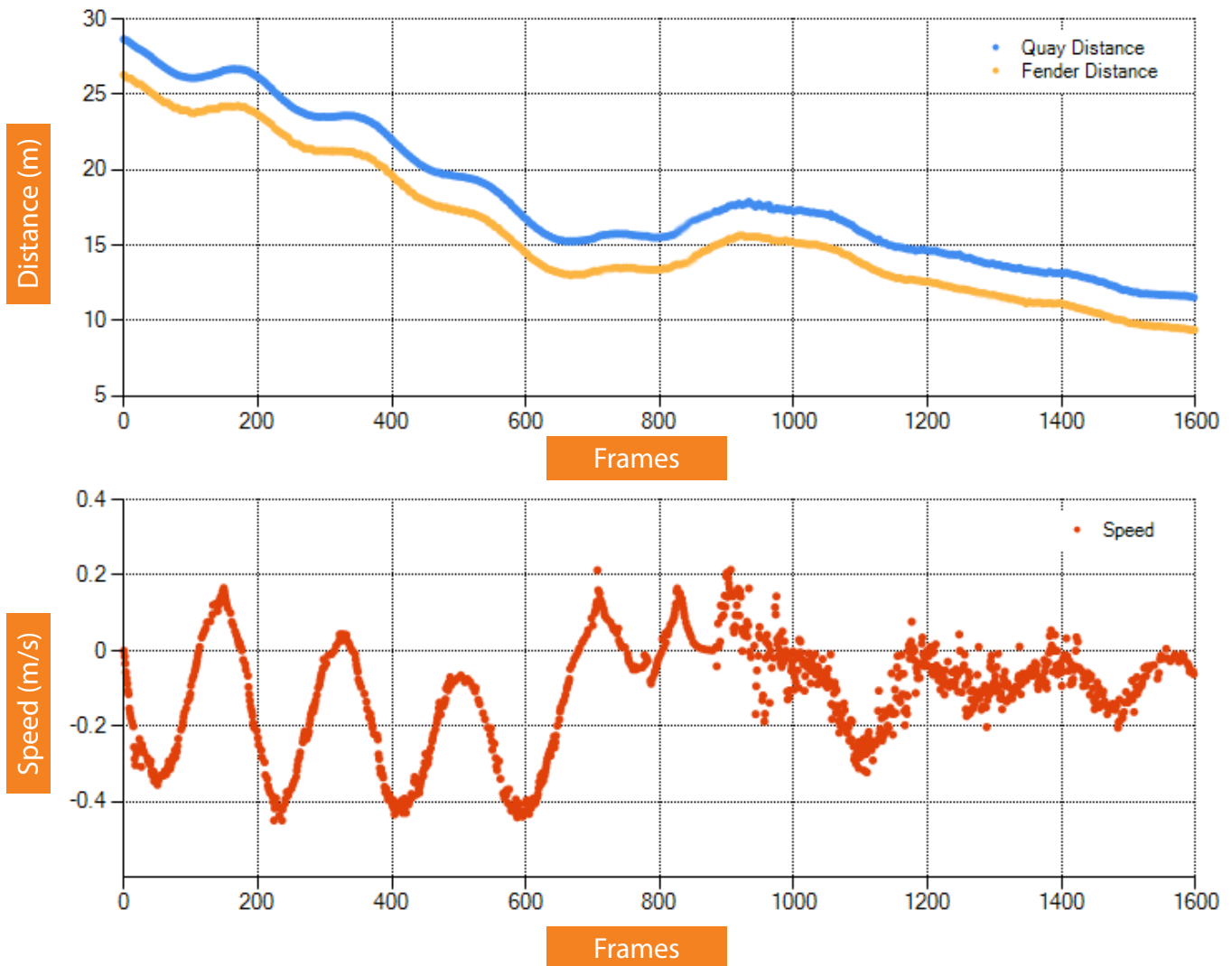
Additional information

- Real time quay measurement
- Adaptable to ever-changing quay sides
- Immune to GPS/GNSS spoofing or jamming
- Increases docking efficiency
- Suitable for short range operations
- Easy to mount
- Targetless operation (No dedicated Quayside infrastructure)



Main data

A sensor performance analysis plot that illustrates the distance and speed measurements during a sea trial on a cruise vessel. The measurements are done at the frame rate of ~10 frames/seconds. The performance delivers the necessary accuracy for the operator to perform a controlled approach to the dock side and make sure the maximum speed at the point of contact with the fenders is not exceeded.



SmartQuay delivers an accurate gap measurement between the vessel and the nearest extended object (e.g. a quay, pier or fender) during docking operations. The system uses a set of network cameras to detect such objects; monitoring the gap as the operation progresses. SmartQuay architecture combines a LWIR camera (Long Wave Infra Red) with a Visual Spectrum camera into a sensor pod. These are mounted fore and aft; port and starboard on each vessel. The LWIR sensor delivers high performance object detection regardless of lighting conditions while the daylight sensor provides an improved user experience when displaying the measurement on a User Interface.

"SmartQuay" is a registered trademark of Wärtsilä Guidance Marine Ltd. All other brand or product names are trademarks or registered trademarks of their respective companies or organisations.

wartsila.com/marine/build/dynamic-positioning/smartquay
sales.wgm@wartsila.com

WÄRTSILÄ® is a registered trademark. Copyright © 2020 Wärtsilä Corporation.
Specifications are subject to change without prior notice.

