

3.5.1 RadaScan Software Release

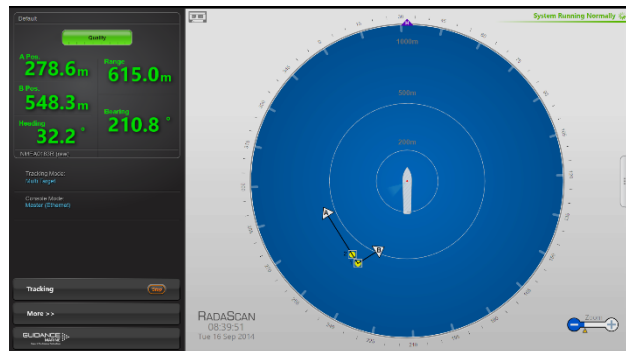
Information contained in this document refers to microwave sensor software 3.5.1 and the new graphical user interface (GUI) for RadaScan and Mini RadaScan.

New Key Features

- ❖ Touch screen
- ❖ Single page aide memoire for new users
- ❖ One touch operations giving simpler operation
- ❖ Context sensitive help providing the right help in the right place
- ❖ 1° selection of blanking zone making clutter eradication simpler
- ❖ Optimum zoom button gives immediate display of all reflections
- ❖ Bigger, clearer, Birds Eye View (BEV)
- ❖ Extended co-ordinates display
- ❖ Animated display

3.5.1 Software Release

The RadaScan Dashboard is a new user interface that has been logically structured and carefully designed to provide an intuitive interface that maximises the opportunities of multi-touch user control and touch screen technology. This innovative user interface enables DP Operators to use RadaScan safely and effectively whilst providing optimum positioning performance.



Deliveries

The old console is no longer available and the new Dashboard will be supplied as standard.

To discuss your interface upgrade options, the new software release and training, please contact a member of Customer Services or your sales representative.

Contact Information

Contact Customer Services

UK: customerservices@guidance.eu.com

USA: customerservices.us@guidance.eu.com

Contact Sales

E: sales@guidance.eu.com

This document is protected under copyright with all rights reserved. No part of this document may be copied, photocopied, reproduced, translated or reduced to any electronic medium or machine readable form, in whole or in part, without the prior written consent of Guidance Navigation Ltd.

Copyright: ©2014 Guidance Navigation Ltd. All worldwide rights reserved.

Guidance Navigation Ltd, 4 Dominus Way, Meridian Business Park, Leicester, LE19 1RP, United Kingdom
Tel: +44 116 229 2600 **Fax:** +44 116 229 2604 **Web:** www.guidance.eu.com